

SILCA MAGAZINE

Triax Quattro

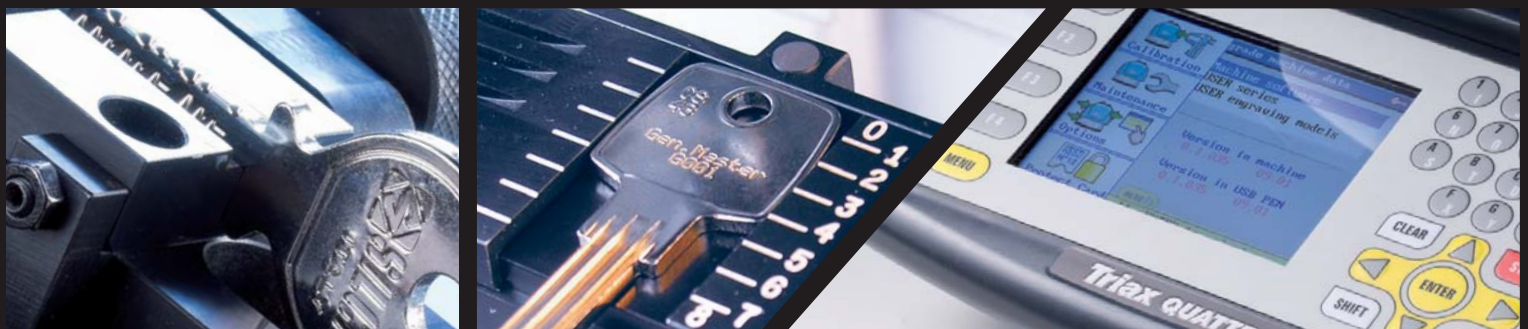
The new Silca Triax Quattro is a real technological jewel: easy to use and fast, it incorporates quality and precision in cutting even the most complex laser type and dimple keys.



NEW
info: www.silca.biz

**Fast and silent,
it brings excellence to your key cutting service.**

Silca Triax Quattro



Triax Quattro

Easy to use

Large coloured **graphic display** on machine:
optimum resolution, wide screen (5.7" - 70x120 mm).

Innovative software

- **Intuitive software interface.**
- **Innovative software functions** designed to meet the needs of key cutters.

More powerful optimized work cycle

- **New motor with higher cutter speed** for top quality cutting resolution.
- **New spindle.**
- **Improved axis movement.**
- **Motorized fourth axis for angulated cuts +/- 45°.**

Clamps

Triax Quattro comes with an **R1/R12 manual clamp** (cutting + engraving).

Optional clamps

- **R4 optional manual clamp for angulated cuts**

Triax Quattro can use an R4 optional manual clamp for angulated cuts.

- **R13 motorized tilting clamp for angulated cuts**

The innovative R13 tilting clamp, motorized for angulated cuts (+/- 45°), ensures top quality cutting performance with high speed working cycles.

Cutter Holder

The holder has **14 cutter positions** and comes with an adhesive on which to write the names of the cutters to help you identify them immediately.

USB Pen Drive

A **pen drive (1GB)** incorporated in the machine allows you to:

- perform an optimized update procedure in just 5 minutes (via pen drive);
- make backups of all the data saved on the machine;
- save your data card codes in complete security;
- optimize the use of the stand-alone mode for:
 - all Silca tables and series and for those customized by you;
 - use customized data cards created by SKP "Code Maker".

Technical Data

Power supply:	230V – 50Hz, 120V – 60Hz, 100V – 50/60Hz
Tool speed:	6.000-17.000 rpm
Movements:	on 3 axis with ball screws activated by step motors, on rectified roller guides
Clamp:	R1+R12 universal, interchangeable
Runs:	upper axis X: 32 mm / lower axis Y: 57 mm / vertical axis Z: 30 mm
Dimensions:	width: 450 mm, depth: 600 mm, height: 510 mm (with raised shield: 680 mm)
Mass:	51.5 Kg

Large Graphic Display



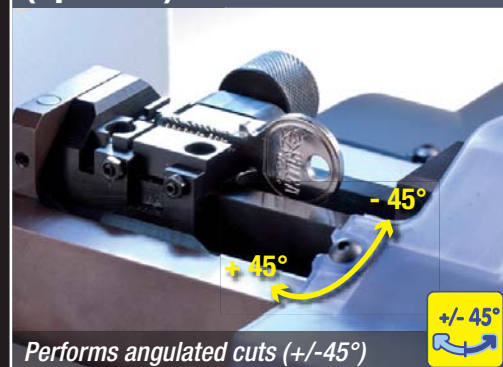
Cutter Holder



USB Pen Drive



Motorized Tilting Clamp R13 (optional)



Performs angulated cuts (+/-45°)



Can be installed quickly

